

## Strawberries (ROSACEAE)

(D. S. Bacon) I have observed that his father-in-law's tomatoes and **strawberries** have seen improvement with *Paná-k-ite*.

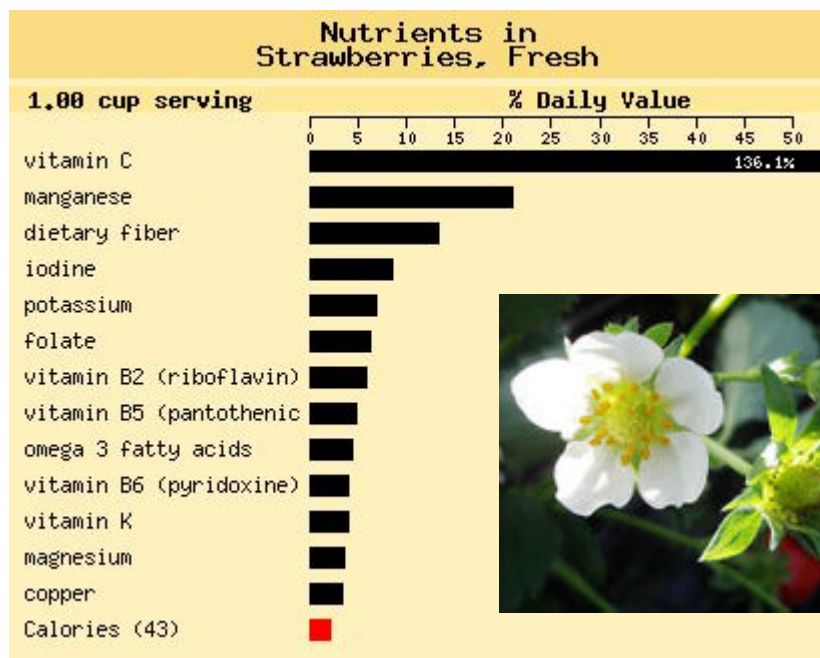


(John G., Carpenteria, CA) As a commercial grower, I have been buying a couple truckloads at a time of Window Peak Chelated Trace Minerals ("*Paná-k-ite*") for application on my



**strawberries**. I use approximately 1000 pounds per acre of the regular, un-screened, bulk material. Each application lasts about three years, during which time my strawberries never suffer from any blight like my neighbors are getting on theirs. It is a very cost-effective additive to my soil particularly noticeable at harvest times. The strawberries are larger and sweeter than without it, and I believe they hold up better during shipping. I sell lots of them at the Farmer's Markets in the Santa Barbara area and they go like hotcakes.

(Ralph B., Pahump Valley, NV) I have been using Montmorillonite from Panaca (*Paná-k-ite*) in my garden on asparagus, squash, tomatoes, **strawberries**, bellpeppers, and fruit trees since 1973.



<http://www.whfoods.com/genpage.php?tname=foodspice&dbid=32>



**Close-up Strawberry Flower**

<http://en.wikipedia.org/wiki/Strawberry>